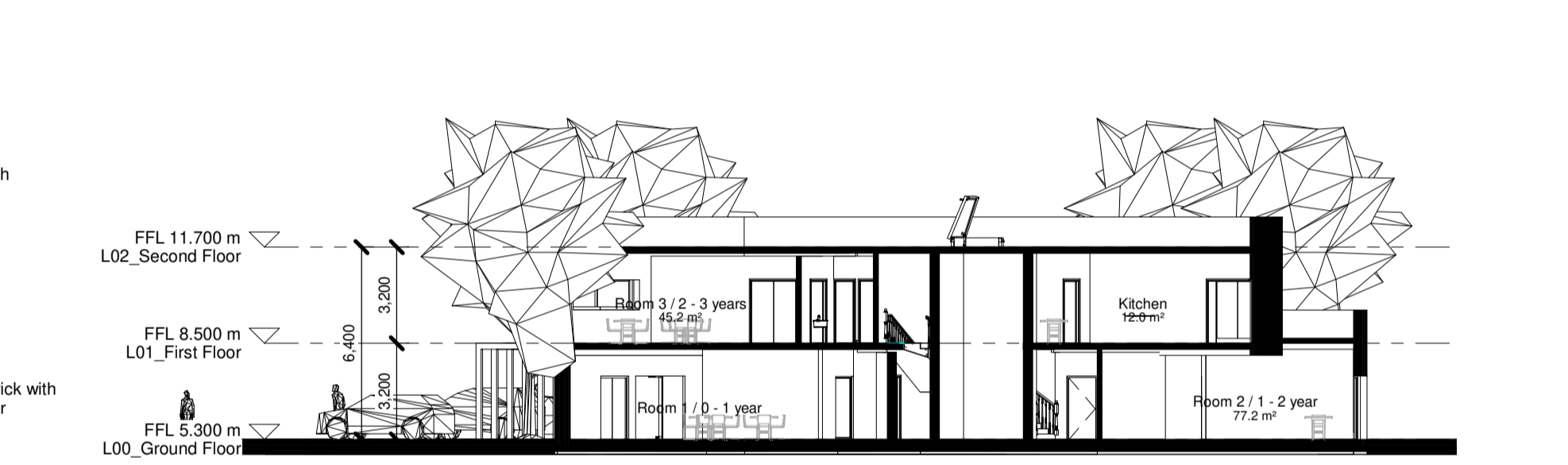


Walls
Selected clay bricks to varying colours as defined in the different character areas as indicated, painted nap sand cement render, exposed plaster bands around external opens / lintels. Concrete or metal sills, lintels or copings as indicated on elevations.

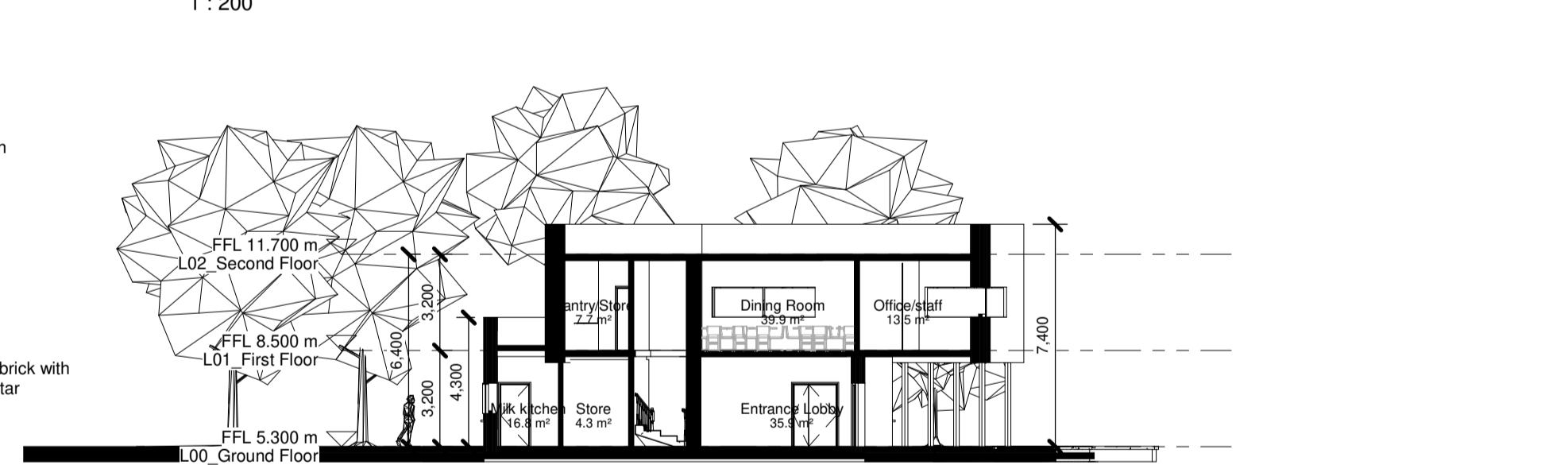
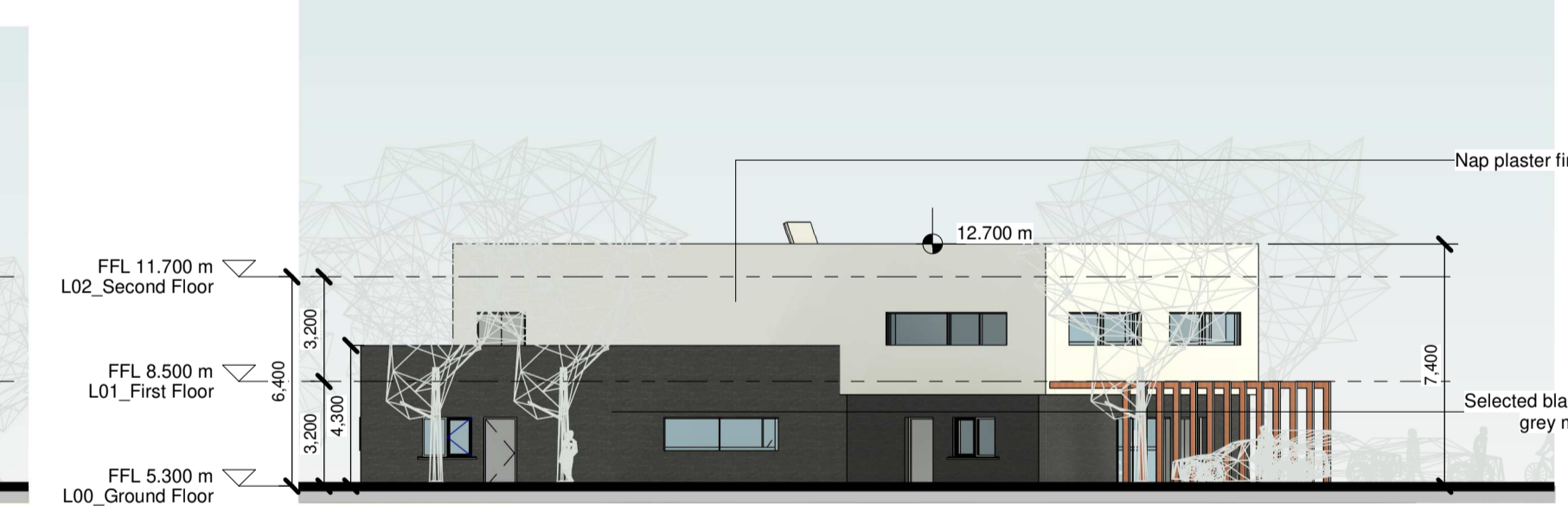
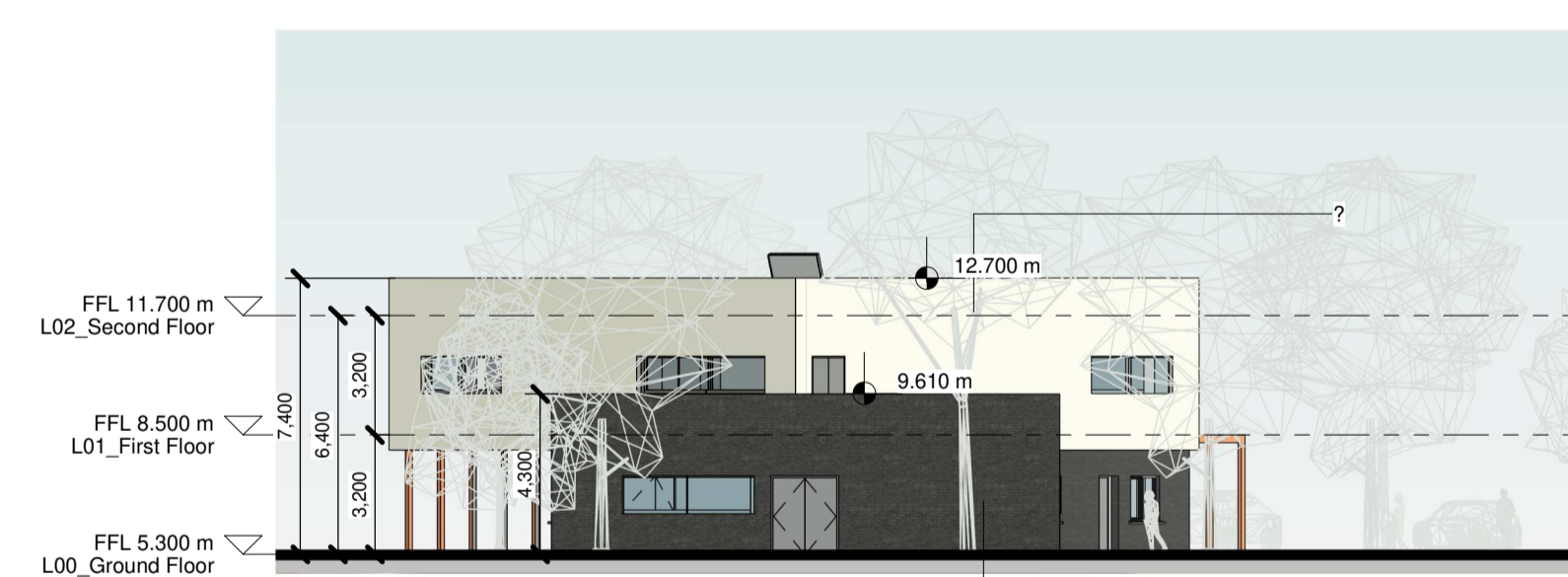
- Facing Brick 1 - Red / Brown Blend with flush grey mortar
- Facing Brick 2 - Grey brick with recessed dark grey mortar
- Facing Brick 3 - Light Buff brick with recessed grey mortar
- Random rubble stone cladding
- Sand / cement nap finish to external leaf of blockwork, paint then applied.

Windows
Windows to be double glazed windows. External doors to be high security impact resistant timber hall doors to EN 1627 and level access threshold to approved colour. Obscure windows to bathrooms and where overlooking adjoining amenity spaces as indicated on elevation drawings.

Roof
1. Bulwose flat concrete roof tiles, fixed to timber battens on vapour permeable roofing underlay, on timber / steel roof structure to a suitable roof pitch manufactured in compliance with EN 490:2005.
2. Low pitch roofs or canopies to be either single ply membrane. Tropical type membranes or select precast metal roofing with standing seams.
3. Rainwater goods, downpipes etc. to be Aluminium Alloy.
4. Ballustrades to be painted mild steel uprights.



- WT1**
Wall Type 1 - Selected dark red brick with grey mortar
- WT2**
Wall Type 2 - Selected black brick with grey mortar
- WT3**
Wall Type 3 - Selected buff brick with grey mortar
- WT4**
Wall Type 4 - Random rubble stone cladding
- WT5**
Wall Type 5 - Painted render nap finish



Notes:
- Do not scale from this drawing. Use figured dimensions in all cases.
- Verify dimensions on site and report any discrepancies to the Architect immediately.
- This drawing is to be read in conjunction with the Architect's Specification.
- © This drawing is copyright and may only be reproduced with the Architect's permission.

Drawing Notes:
Refer to windows, doors and curtain walling schedules for more information on details and types. Refer to all other referenced architectural drawings for more information.
Refer also to all other consultants drawings, specifications, reports and schedules including: Wash Goodfellow for structural and civils. Renaissance for MEP information, JGA for fire strategy information, Ryan & Associates for DAC information, ATJ Urbanism & Landscape for landscape plan boundary details & Amplitude Acoustics for Acoustics.

Rev.	Date	Drawn	Issue for Planning	Details of Issue / Revision
A	Sep 21	A.R.	Issue for Planning	

reddy architecture + urbanism

Dartry Mills,
Dartry Road
Dublin 6,
D06 Y0E3

T: +353 (0)1 498 7000
W: www.reddyarchitecture.com
E: info@reddyarchitecture.com

Client Details:
Voyage Property Limited,
Ashbourne Hall,
Dock Road,
Limerick.

Project Details:
Greenpark SHD
Limerick
Drawing Title:
Creche Plans, Elevations & Sections

Job No. P20-133D	Sheet Size: A1	Scale @A1: 1:200
Issue Date: Sep 21	Drawn By: A. Roche	Reviewed By: M. Freaney
Status: S02	Purpose of Issue: 3.0 Planning Application	
Project-Originator-Zone-Level-Type-Role-Classification-Number		Revision
20133-RAU-ZZ-ZZ-DR-A-02.4000		A



Visualisation of creche. (Not to scale.)



Visualisation of creche. (Not to scale.)